



ACCESS WINDOWS

E3 Product Features
 E4 Specifications
 E5 Parts Identification

E5 Access Window

E6 E8 Product Elevations

E6 E7 Access Windows
 E8 Double Access Windows

E9 E12 Product Details

E9 Access Window/Wall Connection
 E10 Double Access Window/Wall Connection
 E11 Access Window
 E12 Double Access Window

E13 Performance Ratings
 E14 E15 Light and Vent Schedule
 E16 E18 Guide Specifications



Access windows are available in StormForce™. See Section K for more detailed information.



StormForce™
 SERIES



A row of Access windows overlook a row of Casements (fixed over operating).
Tuscany Brown metal clad.



ACCESS WINDOWS



Access



Push Out Access

Our unique design allows the sash to rotate 180° outside the window frame, leaving your draperies and blinds untouched and making exterior cleaning a breeze.

PRODUCT FEATURES

STYLES:

Access, Double Access and Push Out Access options.

STANDARD FEATURES

- Natural Douglas Fir interior (no visible finger joints)
- Frame construction designed 4 9/16" (116 mm) jamb
- Clear Low E² insulated glazing with 1/2" (12 mm) airspace
- Roto gear, European push bar, Push Out handle, operator and sash locks available in bronze, white, sandstone and black. Custodial locks are standard on Double Access.
- Push bar operator available for egress requirements
- Extruded aluminum cladding in nine standard colors
- Santoprene™ weatherstrip system
- Insect screens available in bronze, sandstone, linen and black

HARDWARE:

Hardware and hardware finishes are dependent on hardware choices.

GLAZING:

Heat-Smart® 1, 2 and 3, Tranquility®, StormForce™ DP. StormForce™ DP, IP, MP not available for Push Out products.

SIMULATED DIVIDED LITES (SDL) AND GRILLES:

SDL — 3/4" (19 mm), 1 1/8" (29 mm), 2" (50 mm), Removable Grilles.

BRICKMOULD:

2" (50 mm), 3 1/2" (89 mm) and 5 1/2" (140 mm) wood. 2" (50 mm) and 3 1/2" (89 mm) metal.

METAL CLAD COLOR SPECTRUM:

Nine Standard Palette and 27 optional Architectural Palette colors.



For a more in-depth, comprehensive review of **Product Features**, please refer to the **Miscellaneous section**.



Visit the **Loewen Photo Gallery** online at www.loewen.com/home.nsf/info/gallery for a large collection of Loewen product and elevation photography.

Specifications and technical information are subject to change without notice. Metric and Imperial measurements are converted accurately, however in some cases industry conventions cause a 1 mm variance. (Example: 3/4" is shown as 20 mm for all glass measurements as this is the industry standard.)

LEGEND: ● — STANDARD
○ — OPTIONAL

1 – Nine standard metal clad colors, 27 optional
2 – With optional push bar or push out handle

3 – Some size restrictions apply

	Access
Hardware Styles	
Folding Crank Handle	●
Push Out Handle	○
Push Bar	○
Sash Lock	●
Custodial Lock	○
Finish Options	
Linen	●
Sandstone	●
Bronze	●
Black	●
Oil Rubbed Bronze	○
Antique Brass	○
Bright Brass	○
Brushed Chrome	○
Satin Nickel	○
Rustic Bronze	○

	Access
Variables	
Function:	
Use for Egress	● ²
Available with Screen	●
Concealed Hardware	
Durability:	
Low Maintenance Metal Clad Exterior	● ¹
Clear Douglas Fir Exterior Finish	●
Clear Mahogany Exterior Finish	○
Primed Exterior Finish	
Performance:	
Heat-Smart® Plus 1	●
Heat-Smart® Plus 2, 3 ³	○
Tranquility®	○
StormForce™	○
Appearance:	
SDL	○

All standard window configurations are represented in this **Loewen Architectural Catalog**. Numerous custom opportunities exist — please contact your Authorized Loewen Dealer.



SPECIFICATIONS

STANDARDS

Units have been tested by an independent laboratory for air and water infiltration and structural performance.

FRAME AND SASH

Manufactured from Coastal Douglas Fir kiln-dried lumber with frame construction designed for 4 9/16" (116 mm) jamb. Available in clad only.

ALTERNATE SPECIES

The entire Loewen product line is also available in optional Mahogany (*Swietenia macrophylla*) or optional FSC chain of custody certified Douglas Fir (SW-COC-1739).

PRESERVATIVE TREATED

All wood parts are dipped in approved preservative.

GLAZING

A wood stop combined with glazing materials ensures a positive seal.

INSULATING GLASS

Double and triple glass configurations with 1/2" (12 mm) airspace.

HEAT-SMART® Plus Systems 1, 2 and 3

Heat-Smart® best describes the benefits of the product that incorporates Low E² coating and argon gas. Heat-Smart® systems help reduce heating and cooling costs, providing superior energy efficiency.

SIMULATED DIVIDED LITES (SDL) AND GRILLES

Standard SDL come without airspace grilles. Optional airspace grilles available. Grille bars are permanently applied to the interior and exterior.

Loewen natural clear wood grilles install from the inside of the house and are removable for cleaning.

Note: Optional Grilles

Natural wood grilles will be supplied unless otherwise specified.

METAL CLADDING

Heavy duty extruded aluminum exterior metal cladding is available in nine Standard Palette and 27 optional Architectural Palette colors. Interior of window remains a natural wood finish as a standard. Metal clad units are supplied ready-to-install complete with nailing flange.

HARDWARE

Unique hardware allows window sash to rotate 180° for easy cleaning from the inside. The hinge system is amazingly strong, allowing for larger than average single operating sash. Standard hardware is the Maxim scissor type roto gear operator that detaches at the sash, allowing it to open out to 180° for ease of cleaning. All Access roto gear units are supplied with dual sash locks for added security and tighter seal. All steel components have Truth E-Gard™ coating for superior corrosion protection.

HARDWARE OPTION

Roto-gear operator and sash locks are standard in bronze, linen, sandstone or black. Access units also available with an Optional Push Bar handle which utilizes a single activated triple locking mechanism, at an additional charge. Hardware finishes are dependent on hardware style chosen.

DOUBLE WEATHERSTRIP

Q-Ion foam filled weatherstrip on frame plus dual sash weatherstrip barrier on top rail ensure maximum energy efficiency and water performance.

SCREEN

Screens have a bronze, linen, sandstone or black aluminum frame, screened with anti-glare fiberglass cloth.

EGRESS

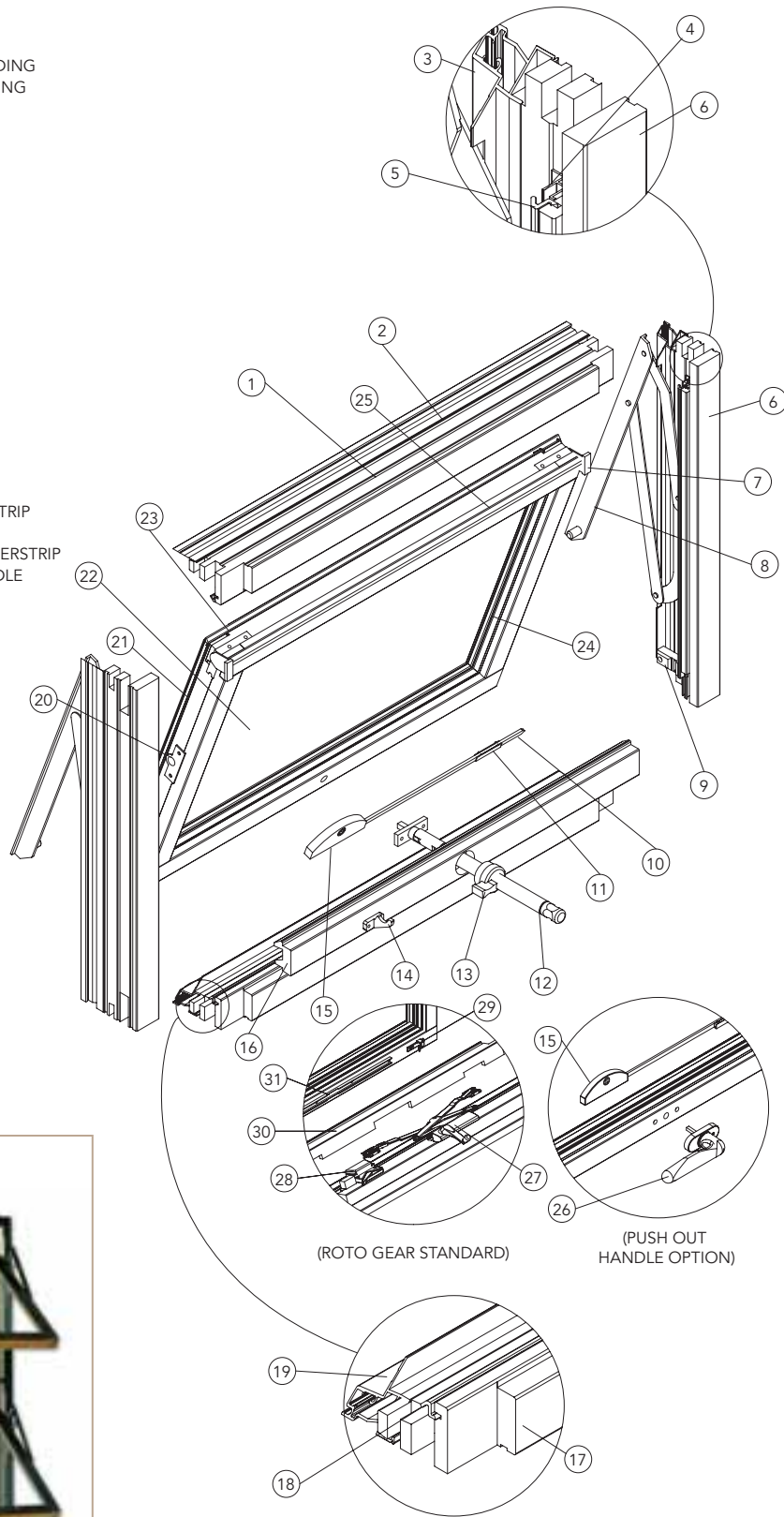
To meet egress with the Access window, the optional push bar operator must be ordered. Sizes noted in elevation drawings meet national egress codes for fire escape. Canada and U.S.A. are marked separately. Consult local building codes for confirmation of size requirements for your area. All calculations are done with double insulated sash and standard hardware.

PARTS IDENTIFICATION

ACCESS WINDOW

NO. DESCRIPTION

- 1 HEAD JAMB
- 2 HEAD JAMB FRAME CLADDING
- 3 SIDE JAMB FRAME CLADDING
- 4 HEAD SLIDE TRACK
- 5 WEATHERSTRIP
- 6 SIDE JAMB
- 7 HEAD SLIDE
- 8 HINGE
- 9 END KEEP
- 10 ESPAGNOLETTE BAR
- 11 ESPAGNOLETTE GUIDE
- 12 PUSH BAR (OPTIONAL)
- 13 LOCK CYLINDER
- 14 SADDLE
- 15 LOCK BOX
- 16 SILL COVER (PUSH BAR)
- 17 SILL
- 18 WEATHERSTRIP
- 19 SILL FRAME CLADDING
- 20 CENTER SASH ASSEMBLY
- 21 SASH
- 22 SEALED UNIT
- 23 PRIMARY SASH WEATHERSTRIP
- 24 INTERIOR GLAZING STOP
- 25 SECONDARY SASH WEATHERSTRIP
- 26 PUSH OUT LOCKING HANDLE
- 27 ROTO GEAR
- 28 SASH LOCK
- 29 KEEPER
- 30 SILL COVER (ROTO GEAR)
- 31 TRACK



Double Access shown (two sash in one frame).

Note: • This drawing is not to scale. For parts identification only.



Access Windows



E5

www.loewen.com

ACCESS WINDOW ELEVATIONS

ACCESS WINDOWS

Rough Opening	in.	32 1/4	36 3/16	40 1/8	48	55 7/8	
	mm	819	919	1019	1219	1419	
Unit O.S.M.	in.	31 1/2	35 7/16	39 3/8	47 1/4	55 1/8	
	mm	800	900	1000	1200	1400	
24 3/8 619	23 5/8 600						15 15/16 405
		XS1 0806 A	XS1 0906 A	XS1 1006 A	XS1 1206 A	XS1 1406 A	
32 1/4 819	31 1/2 800						23 13/16 605
		XS1 0808 A	XS1 0908 A	XS1 1008 A	XS1 1208 A	XS1 1408 A	24 13/16 631
36 3/16 919	35 7/16 900						27 3/4 705
		XS1 0809 A	XS1 0909 A	XS1 1009 A	XS1 1209 A	XS1 1409 A	28 3/4 731
40 1/8 1019	39 3/8 1000						31 11/16 805
		XS1 0810 A	XS1 0910 A	XS1 1010 A	XS1 1210 A	XS1 1410 A	32 11/16 831
48 1219	47 1/4 1200						39 9/16 1005
		XS1 0812 A	XS1 0912 A	XS1 1012 A	XS1 1212 A	XS1 1412 A	40 5/8 1031
55 7/8 1419	55 1/8 1400						47 7/16 1205
		XS1 0814 A	XS1 0914 A	XS1 1014 A	XS1 1214 A	XS1 1414 A	48 7/16 1231
59 3/16 1519	59 1/16 1500						51 3/8 1305
		XS1 0815 A	XS1 0915 A	XS1 1015 A	XS1 1215 A	XS1 1415 A	52 3/8 1331
63 3/4 1619	63 1600						55 5/16 1405
		XS1 0816 A	XS1 0916 A	XS1 1016 A	XS1 1216 A		56 5/16 1431
		in. 24 mm 610	in. 27 15/16 mm 710	in. 31 7/8 mm 810	in. 39 3/4 mm 1010	in. 47 5/8 mm 1210	Visible Glass
		in. 25 1/16 mm 636	in. 29 mm 736	in. 32 15/16 mm 836	in. 40 13/16 mm 1036	in. 48 11/16 mm 1236	Glass Size

■ Canadian Egress
■ U.S.A. Egress

Access Windows

E6

Loewen

Canada and U.S.A. 1.800.563.9367 / International 204.326.6446

Note: • SDL/Grille patterns are dependent on SDL/Grille type. All patterns shown in this catalog are for illustration purposes only – please verify SDL/Grille patterns before confirming your order.
• All information is subject to HP1 glazing.

ACCESS WINDOW ELEVATIONS

ACCESS WINDOWS

Rough Opening	in.	59 13/16	63 3/4	71 5/8	
	mm	1519	1619	1819	
Unit O.S.M.	in.	59 1/16	63	70 7/8	
	mm	1500	1600	1800	
24 3/8	619				15 15/16 405
		XS1 1506 A	XS1 1606 A	XS1 1806 A	
32 1/4	819				23 13/16 605
		XS1 1508 A	XS1 1608 A	XS1 1808 A	24 13/16 631
36 3/16	919				27 3/4 705
		XS1 1509 A	XS1 1609 A	XS1 1809 A	28 3/4 731
40 1/8	1019				31 11/16 805
		XS1 1510 A	XS1 1610 A	XS1 1810 A	32 11/16 831
48	1219				39 9/16 1005
		XS1 1512 A	XS1 1612 A	XS1 1812 A	40 5/8 1031
55 7/8	1419				47 7/16 1205
		XS1 1514 A			48 7/16 1231
59 13/16	1519				51 3/8 1305
		XS1 1515 A			52 3/8 1331
		in. 51 9/16	55 1/2	63 3/8	Visible Glass
		mm 1310	1410	1610	
		in. 52 5/8	56 9/16	64 7/16	Glass Size
		mm 1336	1436	1636	

■ Canadian Egress
■ U.S.A. Egress

Loewen

Access Windows

E7

Note: • SDL/Grille patterns are dependent on SDL/Grille type. All patterns shown in this catalog are for illustration purposes only – please verify SDL/Grille patterns before confirming your order.
 • All information is subject to HP1 glazing.

DOUBLE ACCESS WINDOW ELEVATIONS

DOUBLE ACCESS WINDOWS

Rough Opening	in.	32 1/4	36 3/16	40 1/8	48	55 7/8	
	mm	819	919	1019	1219	1419	
Unit O.S.M.	in.	31 1/2	35 7/16	39 3/8	47 1/4	55 1/8	
	mm	800	900	1000	1200	1400	
63 3/4 1619	63 1600						23 5/8 645 26 7/16 671
		DX1 0816 AA	DX1 0916 AA	DX1 1016 AA	DX1 1216 AA	DX1 1416 AA	
71 5/8 1819	70 7/8 1800						29 5/16 745 30 3/8 771
		DX1 0818 AA	DX1 0918 AA	DX1 1018 AA	DX1 1218 AA	DX1 1418 AA	
83 7/16 2119	82 11/16 2100						35 1/4 895 36 1/4 921
		DX1 0821 AA	DX1 0921 AA	DX1 1021 AA	DX1 1221 AA	DX1 1421 AA	
95 1/4 2419	94 1/2 2400						41 1/8 1045 42 3/16 1071
		DX1 0824 AA	DX1 0924 AA	DX1 1024 AA	DX1 1224 AA		
111 2819	110 1/4 2800						49 1245 50 1/16 1271
		DX1 0828 AA	DX1 0928 AA	DX1 1028 AA	DX1 1228 AA		
		in. 24	27 15/16	31 7/8	39 3/4	47 5/8	Visible Glass
		mm 610	710	810	1010	1210	
		in. 25 1/16	29	32 15/16	40 13/16	48 11/16	Glass Size
		mm 636	736	836	1036	1236	

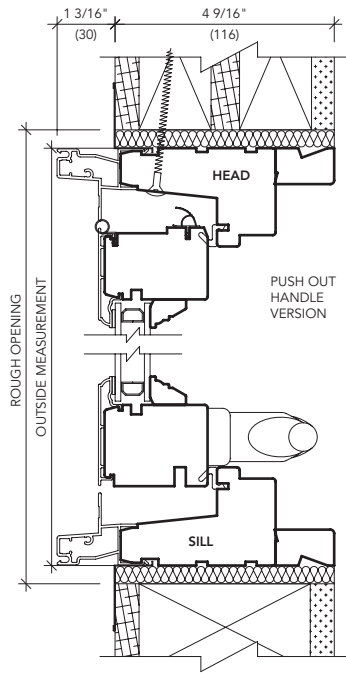
Note:

- SDL/Grille patterns are dependent on SDL/Grille type. All patterns shown in this catalog are for illustration purposes only – please verify SDL/Grille patterns before confirming your order.
- All information is subject to HP1 glazing.

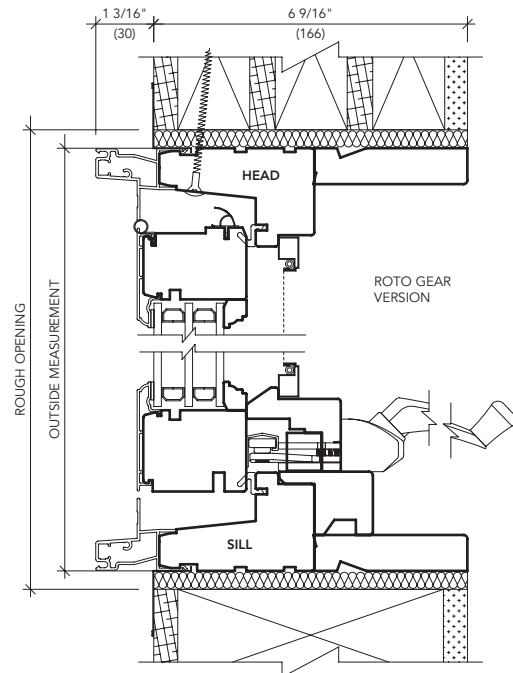
ACCESS WINDOW/WALL CONNECTION DETAIL

HEAD & SILL DETAILS

3" = 1'-0"



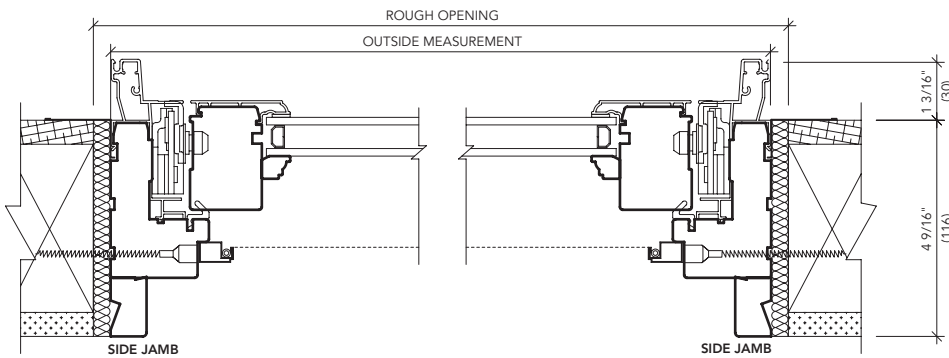
METAL CLAD DOUBLE 4 9/16" (116 mm)



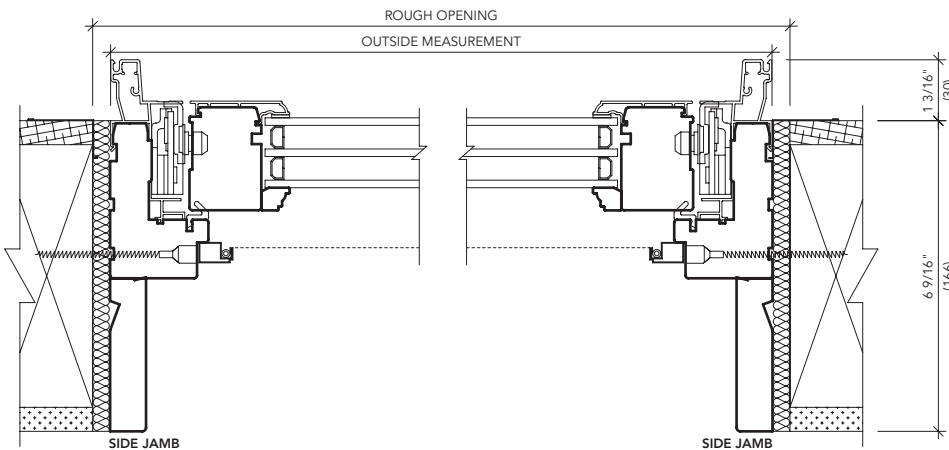
METAL CLAD TRIPLE 6 9/16" (166 mm)

PLAN VIEW – METAL CLAD & WOOD

3" = 1'-0"



METAL CLAD DOUBLE 4 9/16" (116 mm)



METAL CLAD TRIPLE 6 9/16" (166 mm)

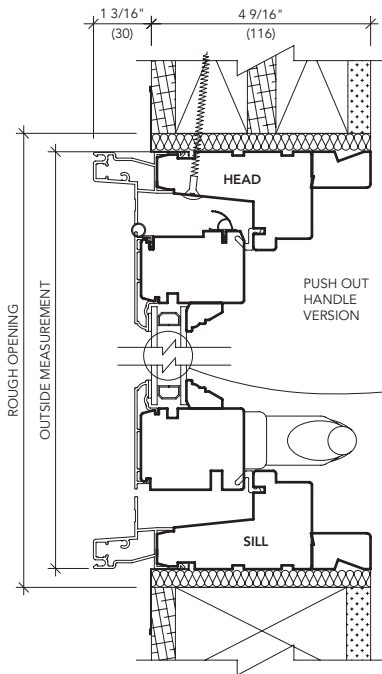
- Note:**
- Other jamb widths available.
 - All dimensions to have +/- 1/16" (2 mm) tolerance.



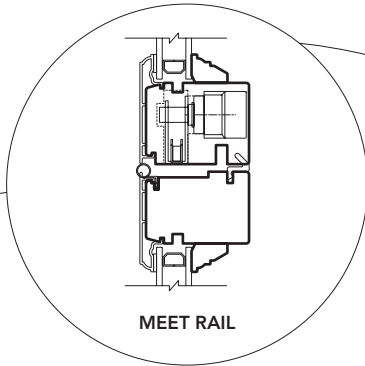
DOUBLE ACCESS WINDOW/WALL CONNECTION DETAILS

HEAD & SILL DETAILS

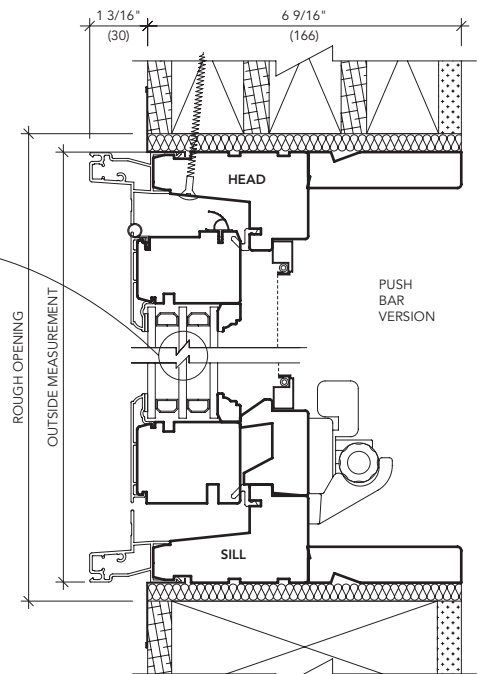
3" = 1'-0"



METAL CLAD DOUBLE 4 9/16" (116 mm)



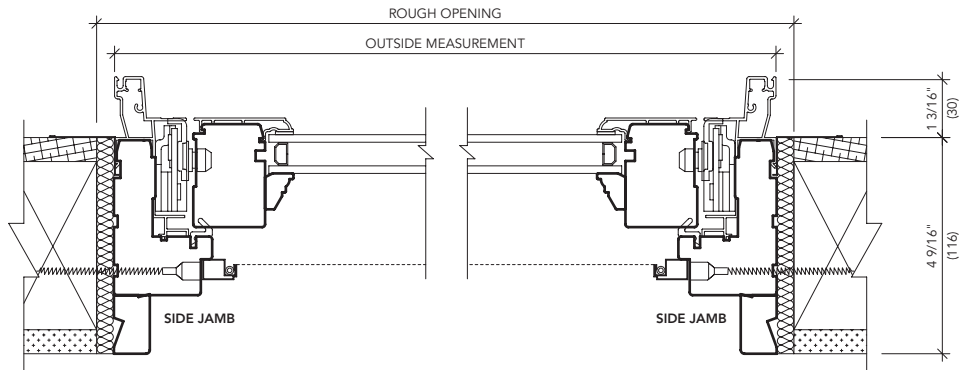
DOUBLE ACCESS



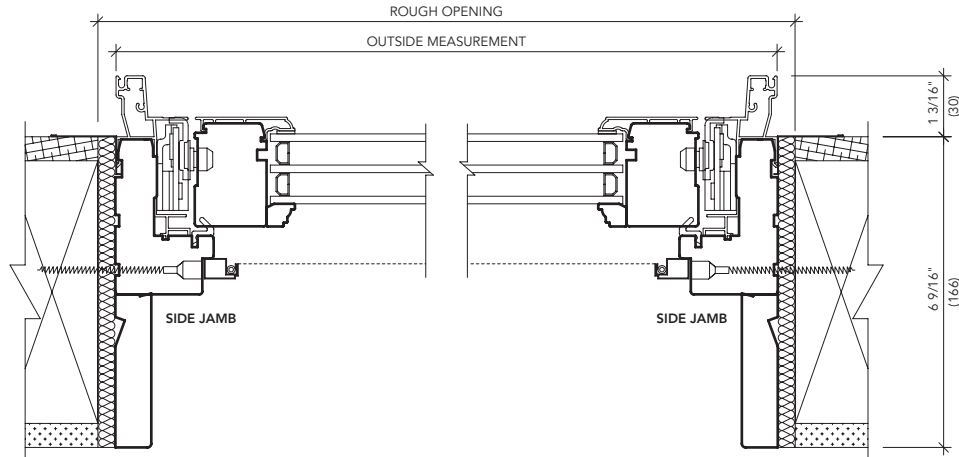
METAL CLAD TRIPLE 6 9/16" (166 mm)

PLAN VIEW – METAL CLAD & WOOD

3" = 1'-0"



METAL CLAD DOUBLE 4 9/16" (116 mm)



METAL CLAD TRIPLE 6 9/16" (166 mm)

Note: • Other jamb widths available.
• All dimensions to have a +/- 1/16" (2 mm) tolerance.

Access Windows

E10

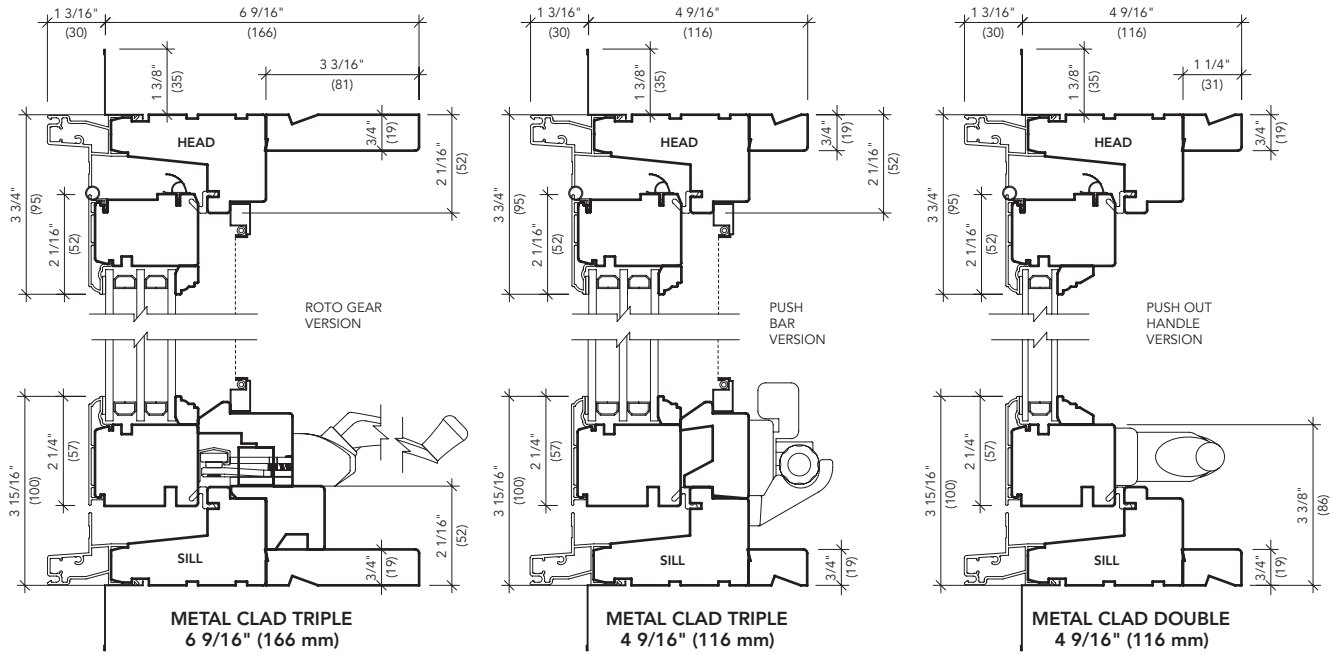


Canada and U.S.A. 1.800.563.9367 / International 204.326.6446

ACCESS WINDOW DETAILS

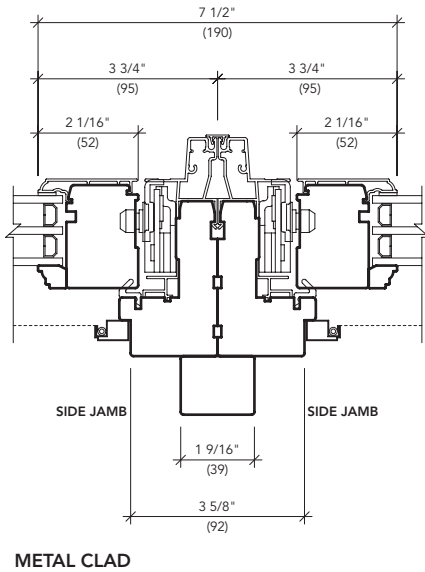
HEAD & SILL DETAILS

3" = 1'-0"

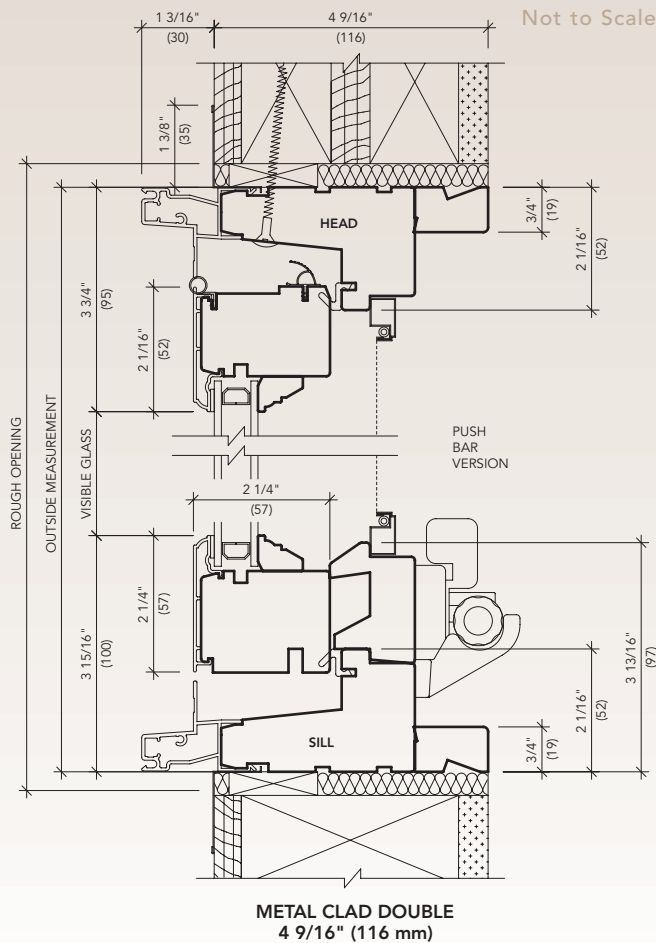


PLAN VIEW

3" = 1'-0"



METAL CLAD



METAL CLAD DOUBLE 4 9/16" (116 mm)

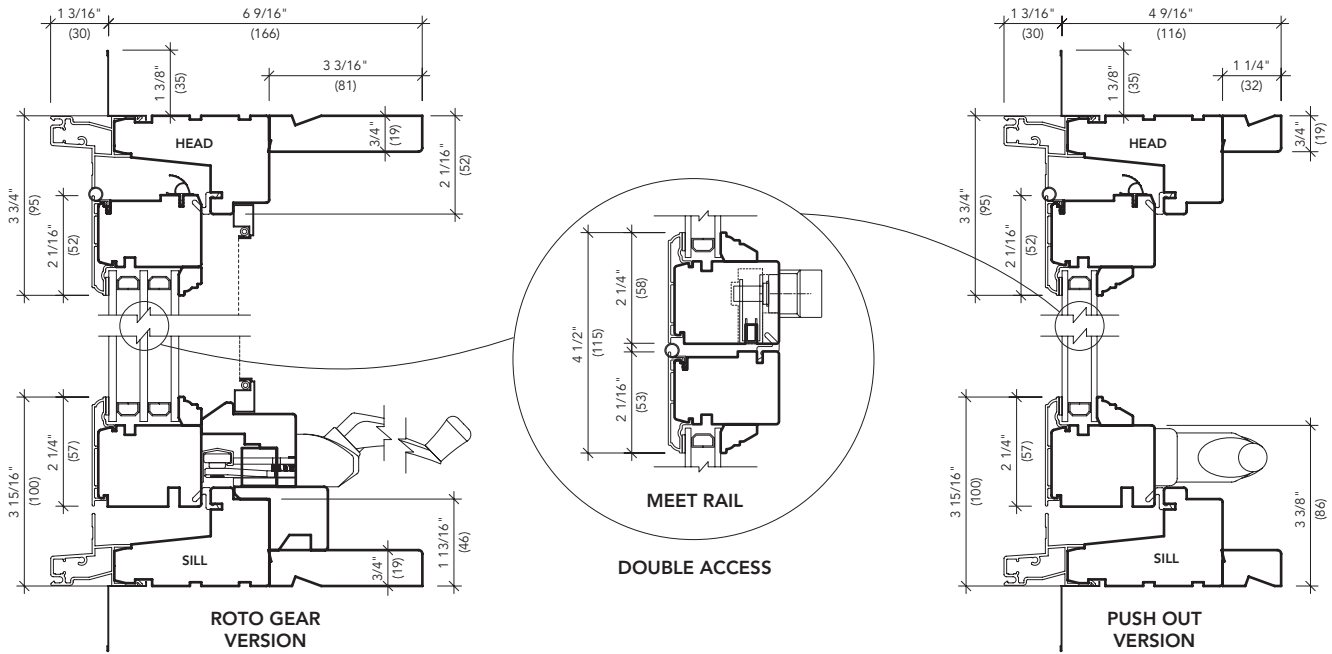
Note: • Other jamb widths available.
• All dimensions to have a +/- 1/16" (2 mm) tolerance.



DOUBLE ACCESS WINDOW DETAILS

HEAD & SILL DETAILS

3" = 1'-0"

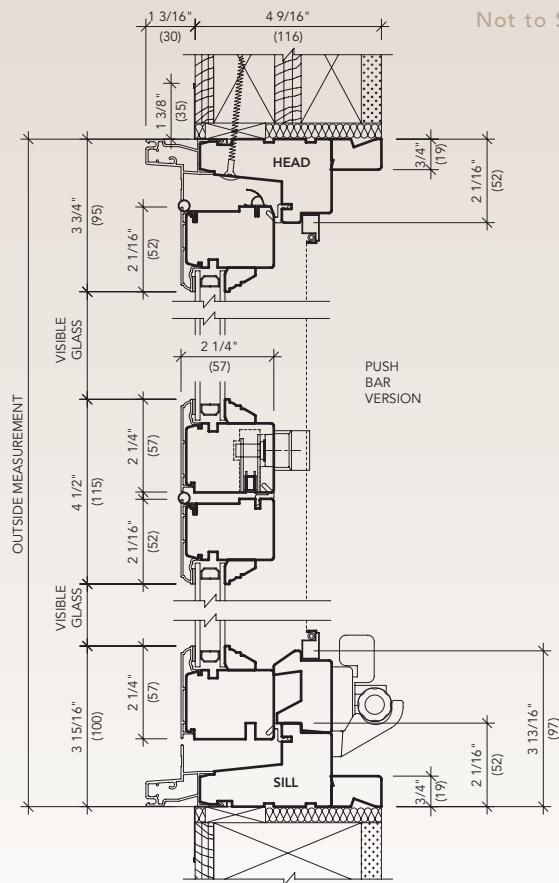


Access Windows

E12

Loewen

Canada and U.S.A. 1.800.563.9367 / International 204.326.6446



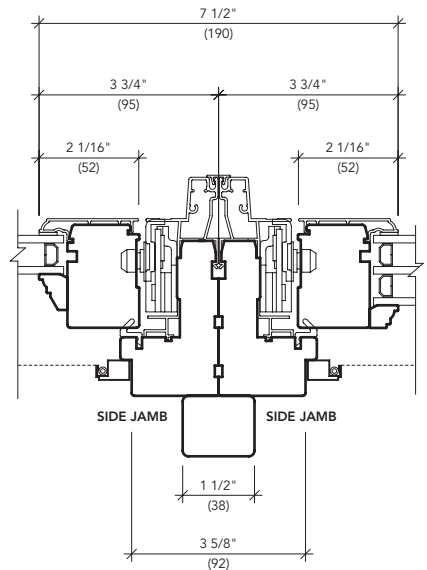
Not to Scale

METAL CLAD DOUBLE
4 9/16" (116 mm)

Note: • Other jamb widths available.
• All dimensions to have a +/- 1/16" (2 mm) tolerance.

PLAN VIEW

3" = 1'-0"



METAL CLAD



ACCESS WINDOW PERFORMANCE RATINGS

CSA A440-00 – CANADA

Product Type	Unit Size	Air Leakage	Water Leakage	Structural	Forced Entry
Access (Metal Clad)	59 1/16" x 39 3/8" (1500 mm x 1000 mm)	A3 0.08 m ³ /hr/m @ 75 Pa	B7 @ 700 Pa (14.63 psf)	C4 @ 4000 Pa (83.6 psf)	F2

AAMA/WDMA 101/I.S.2-97 – U.S.A.

Product Type	Unit Size	Air Leakage	Water Leakage	Structural	Forced Entry
Access (Metal Clad)	59 1/16" x 39 3/8" (1500 mm x 1000 mm)	Pass 0.015 ft ³ /m/ft ² @ 75 Pa	AP-C80 @ 12.00 psf (580 Pa)	AP-C55 @ 82.5 psf (3960 Pa)	F10

NFRC U-FACTOR AND SHGC/VT – ALUMINUM CLAD

Product Type	Glazing Type	Spacer	Gap Fill 1	Gap Fill 2	U-Factor Res	SHGC (max)	VT (max)
Access 47 1/4" x 59 1/16" (1200 mm x 1500 mm)	Double Clear	Standard	Air	-	0.47	0.57	0.60
	Double Clear	Standard	Argon	-	0.45	0.58	0.60
	HP1	Standard	Air	-	0.34	0.31	0.53
	HP1	Standard	Argon	-	0.31	0.31	0.53
	HP2	Standard	Air	Air	0.28	0.29	0.48
	HP2	Standard	Argon	Argon	0.26	0.29	0.48
	HP3	Standard	Air	Air	0.24	0.26	0.42
	HP3	Standard	Argon	Argon	0.22	0.26	0.42
	HP1	Thermal Edge	Air	-	0.34	0.31	0.53
	HP1	Thermal Edge	Argon	-	0.30	0.31	0.53
	HP2	Thermal Edge	Air	Air	0.27	0.29	0.48
	HP2	Thermal Edge	Argon	Argon	0.25	0.29	0.48
	HP3	Thermal Edge	Air	Air	0.23	0.26	0.42
	HP3	Thermal Edge	Argon	Argon	0.21	0.26	0.42
	Triple Clear	Standard	Air	Air	0.35	0.52	0.55
	Triple Clear	Standard	Argon	Argon	0.33	0.52	0.55
	Double Sun 240	Standard	Air	-	0.35	0.20	0.29
	Double Sun 240	Standard	Argon	-	0.31	0.19	0.29
	Triple Sun 240	Standard	Air	Air	0.29	0.18	0.27
	Triple Sun 240	Standard	Argon	Argon	0.27	0.17	0.27
Triple Sun 240 Dual Low E	Standard	Air	Air	0.24	0.16	0.23	
Triple Sun 240 Dual Low E	Standard	Argon	Argon	0.22	0.16	0.23	

ENERGY STAR – CANADA REQUIREMENTS

Product Type	Zone A (0.35)	Zone B (0.32)	Zone C (0.28)	Zone D (0.25)
Access (Metal Clad)	HP1 Air	HP1 Argon	HP2 Air	HP3 Air



ENERGY STAR – U.S.A. REQUIREMENTS

Product Type	Northern Zone (0.35)	North/Central Zone (0.40/.55)	South/Central Zone (0.40/.40)	Southern Zone (0.65/.40)
Access (Metal Clad)	HP1 Air	HP1 Air	HP1 Air	HP1 Air

ACCESS WINDOW LIGHT AND VENT SCHEDULE

IMPERIAL

Model Number	Exposed Glass Area	Vent Opening	Egress Opening with Push Bar Hardware		
	ft ²	ft ²	W	H	Area
XS1 0806	2.66	3.38	27.40	10.98	2.09
XS1 0808	3.97	4.88	27.40	15.83	3.01
XS1 0809	4.63	5.62	27.40	18.39	3.50
XS1 0810	5.28	6.37	27.40	20.71	3.94
XS1 0812	6.60	7.87	27.40	25.83	4.91
XS1 0814	7.91	9.37	27.40	31.02	5.90
XS1 0815	8.57	10.12	27.40	33.62	6.40
XS1 0816	9.22	10.87	27.40	36.22	6.89
XS1 0906	3.09	3.86	31.34	10.98	2.39
XS1 0908	4.62	5.58	31.34	15.83	3.45
XS1 0909	5.39	6.43	31.34	18.39	4.00
XS1 0910	6.15	7.29	31.34	20.71	4.51
XS1 0912	7.68	9.00	31.34	25.83	5.62
XS1 0914	9.21	10.71	31.34	31.02	6.75
XS1 0915	9.97	11.57	31.34	33.62	7.32
XS1 0916	10.73	12.43	31.34	36.22	7.88
XS1 1006	3.53	4.35	35.28	10.98	2.69
XS1 1008	5.27	6.28	35.28	15.83	3.88
XS1 1009	6.14	7.24	35.28	18.39	4.51
XS1 1010	7.02	8.20	35.28	20.71	5.07
XS1 1012	8.76	10.13	35.28	25.83	6.33
XS1 1014	10.50	12.06	35.28	31.02	7.60
XS1 1015	11.37	13.02	35.28	33.62	8.24
XS1 1016	12.25	13.99	35.28	36.22	8.87
XS1 1206	4.40	5.32	43.15	10.98	3.29
XS1 1208	6.57	7.68	43.15	15.83	4.74
XS1 1209	7.66	8.86	43.15	18.39	5.51
XS1 1210	8.75	10.04	43.15	20.71	6.21
XS1 1212	10.92	12.39	43.15	25.83	7.74
XS1 1214	13.10	14.75	43.15	31.02	9.30
XS1 1215	14.18	15.93	43.15	33.62	10.07
XS1 1216	15.27	17.11	43.15	36.22	10.85
XS1 1406	5.27	6.29	51.02	10.98	3.89
XS1 1408	7.88	9.08	51.02	15.83	5.61
XS1 1409	9.18	10.47	51.02	18.39	6.52
XS1 1410	10.48	11.87	51.02	20.71	7.34
XS1 1412	13.08	14.66	51.02	25.83	9.15
XS1 1414	15.69	17.45	51.02	31.02	10.99
XS1 1415	16.99	18.84	51.02	33.62	11.91
XS1 1506	5.71	6.78	54.96	10.98	4.19
XS1 1508	8.53	9.78	54.96	15.83	6.04
XS1 1509	9.94	11.28	54.96	18.39	7.02
XS1 1510	11.35	12.78	54.96	20.71	7.90
XS1 1512	14.17	15.78	54.96	25.83	9.86
XS1 1514	16.99	18.79	54.96	31.02	11.84
XS1 1515	18.40	20.29	54.96	33.62	12.83
XS1 1606	6.14	7.26	58.89	10.98	4.49
XS1 1608	9.18	10.48	58.89	15.83	6.47
XS1 1609	10.70	12.09	58.89	18.39	7.52
XS1 1610	12.21	13.70	58.89	20.71	8.47
XS1 1612	15.25	16.92	58.89	25.83	10.56
XS1 1806	7.02	8.23	66.77	10.98	5.09
XS1 1808	10.48	11.88	66.77	15.83	7.34
XS1 1809	12.21	13.70	66.77	18.39	8.53
XS1 1810	13.95	15.53	66.77	20.71	9.60
XS1 1812	17.41	19.18	66.77	25.83	11.98

Access Windows

E14



Canada and U.S.A. 1.800.563.9367 / International 204.326.6446

ACCESS WINDOW LIGHT AND VENT SCHEDULE

METRIC

Model Number	Exposed Glass Area	Vent Opening	Egress Opening with Push Bar Hardware		
	m ²	m ²	W	H	Area
XS1 0806	0.247	0.314	0.696	0.279	0.194
XS1 0808	0.369	0.453	0.696	0.402	0.280
XS1 0809	0.430	0.523	0.696	0.467	0.325
XS1 0810	0.491	0.592	0.696	0.526	0.366
XS1 0812	0.613	0.731	0.696	0.656	0.456
XS1 0814	0.735	0.871	0.696	0.788	0.548
XS1 0815	0.796	0.940	0.696	0.854	0.595
XS1 0816	0.857	1.010	0.696	0.920	0.640
XS1 0906	0.288	0.359	0.796	0.279	0.222
XS1 0908	0.430	0.518	0.796	0.402	0.320
XS1 0909	0.501	0.598	0.796	0.467	0.371
XS1 0910	0.572	0.677	0.796	0.526	0.419
XS1 0912	0.714	0.837	0.796	0.656	0.522
XS1 0914	0.856	0.996	0.796	0.788	0.627
XS1 0915	0.927	1.075	0.796	0.854	0.680
XS1 0916	0.998	1.155	0.796	0.920	0.732
XS1 1006	0.328	0.404	0.896	0.279	0.250
XS1 1008	0.490	0.583	0.896	0.402	0.360
XS1 1009	0.571	0.673	0.896	0.467	0.418
XS1 1010	0.652	0.762	0.896	0.526	0.472
XS1 1012	0.814	0.942	0.896	0.656	0.587
XS1 1014	0.976	1.121	0.896	0.788	0.706
XS1 1015	1.057	1.210	0.896	0.854	0.765
XS1 1016	1.138	1.300	0.896	0.920	0.824
XS1 1206	0.409	0.494	1.096	0.279	0.306
XS1 1208	0.611	0.713	1.096	0.402	0.441
XS1 1209	0.712	0.823	1.096	0.467	0.511
XS1 1210	0.813	0.933	1.096	0.526	0.577
XS1 1212	1.015	1.152	1.096	0.656	0.718
XS1 1214	1.217	1.371	1.096	0.788	0.864
XS1 1215	1.318	1.481	1.096	0.854	0.936
XS1 1216	1.419	1.590	1.096	0.920	1.008
XS1 1406	0.490	0.584	1.296	0.279	0.306
XS1 1408	0.732	0.844	1.296	0.402	0.441
XS1 1409	0.853	0.973	1.296	0.467	0.511
XS1 1410	0.974	1.103	1.296	0.526	0.577
XS1 1412	1.216	1.362	1.296	0.656	0.718
XS1 1414	1.458	1.621	1.296	0.788	0.864
XS1 1415	1.579	1.751	1.296	0.854	0.936
XS1 1506	0.531	0.630	1.396	0.279	0.389
XS1 1508	0.793	0.909	1.396	0.402	0.561
XS1 1509	0.924	1.048	1.396	0.467	0.651
XS1 1510	1.055	1.188	1.396	0.526	0.735
XS1 1512	1.317	1.467	1.396	0.656	0.915
XS1 1514	1.579	1.746	1.396	0.788	1.100
XS1 1515	1.710	1.886	1.396	0.854	1.193
XS1 1606	0.571	0.675	1.496	0.279	0.417
XS1 1608	0.853	0.974	1.496	0.402	0.602
XS1 1609	0.994	1.123	1.496	0.467	0.698
XS1 1610	1.135	1.273	1.496	0.526	0.787
XS1 1612	1.417	1.572	1.496	0.656	0.981
XS1 1806	0.652	0.765	1.696	0.279	0.473
XS1 1808	0.974	1.104	1.696	0.402	0.682
XS1 1809	1.135	1.274	1.696	0.467	0.698
XS1 1810	1.296	1.443	1.696	0.526	0.787
XS1 1812	1.618	1.782	1.696	0.656	0.981



Access Windows

E15

GUIDE SPECIFICATIONS

GUIDE SPECIFICATIONS FOR WINDOWS BY LOEWEN

SECTION 08555

ALUMINUM CLAD: ACCESS WINDOW UNITS

PART 1 GENERAL

1.01 SUMMARY

- A. Work Included: Furnish and install factory-assembled aluminum clad Access window units, including glass and glazing, hardware and accessories; as indicated on Drawings and as specified herein.
- B. Related Sections: Other Specification sections that directly relate to the work of this Section include, but are not limited to, the following:
 - 1. Section 06100, Rough Carpentry: Wood framing.
 - 2. Section 07210, Building Insulation: Batt and blanket insulation.
 - 3. Section 07900, Joint Sealers: Perimeter sealants.
 - 4. Section 09900, Painting: Painting and finishing.

1.02 PERFORMANCE REQUIREMENTS

- A. General: Perform testing in accordance with AAMA/WDMA 101 I.S.2 and/or NAFS 1 and/or CSA A440.
- B. Forced Entry: When tested in accordance with ASTM F588, shall be Grade 20/F-2 where applicable.

1.03 SUBMITTALS

- A. Product Data: Submit manufacturer's printed product data, test reports and installation instructions.
- B. Shop Drawings: Submit shop drawings for approval. Include detailed plans, elevations, details, required rough openings, anchors and accessories. Include relationship with adjacent materials. Provide installation templates for work installed by others.
- C. Samples: Submit representative samples of each material that is to be exposed in the completed work. Show full color ranges and finish variations expected.

1.04 QUALITY ASSURANCE

- A. Manufacturer: For each material type required for the work of this section, provide primary materials that are the product of one manufacturer. Provide secondary or accessory materials that are acceptable to the manufacturer of the primary materials.
- B. Installer: A firm with a minimum of three years experience in the type of work required by this Section.
- C. Mock-Up: Prior to commencing the primary work of this section, provide a mock-up of each unit type at locations acceptable to Architect. Obtain Architect's acceptance of visual qualities. Remove and replace units that are not approved. Approved mock-ups built in place may be incorporated into the finished work.

1.05 DELIVERY, STORAGE AND HANDLING

- A. Deliver materials and products in factory labeled packages. Store and handle in strict compliance with manufacturer's instructions and recommendations. Protect from damage from weather, excessive temperatures and construction operations.

ALUMINUM CLAD: ACCESS WINDOW UNITS

08555-1



GUIDE SPECIFICATIONS

GUIDE SPECIFICATIONS FOR WINDOWS BY LOEWEN

1.06 WARRANTY

- A. Provide manufacturer's standard limited warranty covering the following:
 1. Structural members and operating hardware are warranted against defects in material and workmanship for a period of 10 years.
 2. Insulating glass is warranted against material obstruction of transparency resulting from film formation or dust collection on the interior surfaces for a period of 10 years and 20 years on qualifying Heat-Smart® Systems.

PART 2 PRODUCTS

2.01 ACCEPTABLE MANUFACTURER

- A. Provide units manufactured by Loewen (Loewen Inc. in the U.S.A. and C.P. Loewen Enterprises Ltd. in Canada and internationally; 77 Highway 52 West, Steinbach, Manitoba R5G 1B2; 204-326-6446; 800-563-9367; www.loewen.com).

2.02 ALUMINUM CLAD: ACCESS WINDOW UNITS

- A. Aluminum clad Access window units: Preglazed with insulating glass tested to AAMA/WDMA 101 I.S.2 and/or NAFS 1 and/or CSA A440 and/or CSA/AAMA/WDMA 101 I.S.2 A440. Tested for Air Leakage, Water Leakage, Wind Resistance/Load.
 1. Glass and Glazing Type:
 - a. Double-glazed [and Heat-Smart® Plus System 1].
 - b. Triple-glazed [and Heat-Smart® Plus System [2] [3]].
 2. Hardware:
 - a. Style: [Roto gear][Lever][Push Bar] operator, scissor type, detaching at sash to open 180°; dual sash locks.
 - b. Finish*: painted [Bronze][Linen][Sandstone][Black], plated [Antique Brass][Bright Brass] [Brushed Chrome][Satin Nickel], and [Oil Rubbed Bronze]
* Finishes available dependent on hardware style chosen.
 3. Grilles:
 - a. Style: [Colonial][Heritage][Craftsman][_____].
 - b. Simulated Divided Lites: [3/4"][1 1/8"][2"] Grille bars permanently applied to the interior and exterior, with or without airspace grilles.
 4. Insect Screen:
 - a. Full-size, [Bronze][Linen][Sandstone][Black] frame color.
 5. Weatherstrip:
 - a. Foam filled weatherstrip on frame.
 - b. Dual weatherstrip on top rail.

2.03 MATERIALS AND COMPONENTS

- A. Frame and Sash: Coastal Douglas Fir [Mahogany (*Swietenia macrophylla*)] kiln-dried lumber, preservative-treated in accordance with NAFS 1/WDMA 101 I.S.-2/CSA-A440. Interior exposed surfaces are clear Fir [Mahogany]; exterior surfaces aluminum clad. Jamb width [4 9/16" (116 mm)][6 9/16" (166 mm)][other].
- B. Glass and Glazing: Factory sealed units of 3 mm clear glass with 1/2" (12 mm) airspace; wood stop at interior face and foam tape gasket at exterior face.

ALUMINUM CLAD: ACCESS WINDOW UNITS

08555-2



Access Windows



E17

www.loewen.com

GUIDE SPECIFICATIONS

GUIDE SPECIFICATIONS FOR WINDOWS BY LOEWEN

- C. Hardware: Yellow dichromate coating.
- D. Grilles: Manufacturer's standard, unfinished clear wood grilles, interior mounted.
- E. Insect Screen: Black anti-glare fiberglass cloth, set in aluminum frame fitted to inside of window, supplied complete with necessary hardware. Screen frame finish shall be baked enamel.
- F. Finishes:
 - 1. Exterior Aluminum Finish: Manufacturer's [Standard][Architectural] palette; colors as selected from manufacturer's clad color spectrum.
 - 2. Interior Wood Finish: Unfinished, ready for site finishing. Refer to Section 09900, Painting.

PART 3 EXECUTION

3.01 PREPARATION

- A. Examine substrates and conditions in which units will be installed. Do not proceed with installation until unsatisfactory conditions are corrected.

3.02 INSTALLATION

- A. Strictly comply with manufacturer's instructions and recommendations, except where more restrictive requirements are specified in this section. Coordinate installation with adjacent work to ensure proper sequence of construction, clearances and support.
- B. Apply caulking underneath sill, install units plumb, level, complete with drip flashing and in proper relationship with adjacent work. Install without twisting, bowing or springing. Anchor units securely in place.

3.03 ADJUSTING AND CLEANING

- A. Adjust hardware and operating parts for proper operation.
- B. Clean exposed surfaces using manufacturer recommended materials and methods. Remove labels and visible markings. Remove and replace work that cannot be successfully cleaned.
- C. Touch-up damaged coatings and finishes using non-abrasive materials and methods recommended by manufacturer. Eliminate all visible evidence of repair.

Access Windows

E18



ALUMINUM CLAD: ACCESS WINDOW UNITS

08555-3

END OF SECTION

Specifications subject to change without notice.

© 2006 C.P. LOEWEN ENTERPRISES INC. All Rights Reserved.

A copyright license to reproduce this specification is hereby granted to non-manufacturing architects, specification writers and designers.